

# 2020-2021 Impact Report



Emergency Services  
& Atkinson Food Room



First Place Family  
Center, First Place Kids



Affordable Housing  
& Housing Development



Recycling  
& Manufacturing



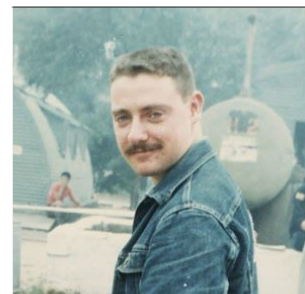
Retail Thrift Stores  
& Used Car Lot



The Youth House  
& Family Night Shelter



Supported Housing  
& Veteran Programs



Egan Warming Center  
& Volunteer Programs



Residential Services  
& Property Management



Self-Sufficiency  
Programs



Emergency Shelter  
& Safe Parking Program



St. Vincent de Paul  
Society of Lane County, Inc.

# LETTER FROM OUR LEADERSHIP TEAM



Terry McDonald  
Executive Director

Bethany Cartledge  
Deputy Director

What a year — and more — that was! Looking back at St. Vincent de Paul Society of Lane County's previous fiscal year (Oct. 1, 2020-Sept. 30, 2021), it's difficult to separate it from the half-year that preceded it. The roughly 18-month period that started in March 2020, with the arrival of our first local COVID-19-related closures, was one of the most tumultuous times we have ever seen as an organization and as a community — not to mention as a state, nation, and world.

**The good news is that during the 12-month period we're reflecting on in this report, SVdP and our entire community pivoted toward solving problems that were unimaginable before the pandemic.**

For example, an already formidable homelessness problem escalated to crisis levels as the pandemic compounded existing economic and employment struggles. We never anticipated that we would have so many homeless people in our community, but we do. And we have risen to that challenge.

It once seemed that no effective answers would come forward to deal with the rampant homelessness seen across Eugene-Springfield, but SVdP and others in the nonprofit community teamed with the public sector to devise solutions. These efforts included the placement of personal-sized Pallet shelters, an efficient way to quickly get people sheltered, at locations throughout the county — including our Dawn to Dawn and First Place Annex shelter sites — and the development of Safe Sleep sites like those at 310 and 410 Garfield St., funded by the City of Eugene and operated by SVdP.

**We have helped get many new people off the streets and into safe shelter, and that momentum continues to build.**

The challenge of affordable housing also continued to grow throughout the previous fiscal year. Despite the pandemic, we pressed on with our decades-long effort to develop



Veteran Services Moved  
to SVdP Lamb Building



Annex Family Night  
Shelter Expanded



McDonald Community  
Vision Fund Launched

more quality housing for very low-income renters. Most notably during the year, we largely completed construction of the 53-apartment Iris Place, our newest affordable-housing property in Eugene.

**SVDP also continued to explore how to develop and place modular & mobile homes at a more rapid pace to address immediate affordable-housing demands, including the need to replace 1000's of homes destroyed during Oregon's disastrous 2020 fire season. That commitment will soon bear fruit in exciting new ways, thanks to state funding that will allow an SVdP-aligned partnership to form an innovative nonprofit mobile-home manufacturer. (Stay tuned!)**

What we saw during the previous fiscal year was a change in the way we address problems, partly through engagement with partners to realize more forward-thinking, sustainable, long-term solutions.

We anticipate that our current fiscal year will see substantial progress on many of the same issues. We will continue to become more proactive and less reactive, seizing every opportunity to address underlying causes of problems and better prepare to respond to emerging community needs.

We will also be more capable of doing just that thanks to the generous financial contributions of our supporters, including donations to our forward-looking McDonald Community Vision Fund. With a solid financial footing, our efforts will increasingly turn toward comprehensive solutions such as homelessness navigation centers, rather than emergency shelters; new forms of supportive housing; and long-term permanent affordable housing, like Iris Place, built much more robustly than in the past.

Of course, SVdP will also continue to provide a social safety net of services so essential to the most vulnerable in our community, supported by revenue from our thrift stores, recycling programs, and other waste-based enterprises that also create jobs and boost environmental stewardship.

**With the ongoing support and engagement of our staff, donors, partners, customers, board members, and volunteers, we pledge to advance in all of these areas and be ready to respond to future community challenges that we might not even have imagined yet.**

We are confident that our next year will see more new solutions than problems. And that new reality would not be possible without the significant tumult, nor the significant progress, we saw during a year like no other.

We thank you for supporting our ongoing efforts to build a healthier community and a better tomorrow for all!



*Scan here  
to get our  
newsletters  
and stay in  
the know about  
all things SVdP!*



**SCAN ME**





# 2021 PROGRAM HIGHLIGHTS



**3,867**

Residents in SVdP  
Affordable Housing



**303,302**

Meals  
Served



**\$2,760,435**

In COVID  
Rent Relief



**1,290**

Adults  
Sheltered

**119**

Families  
Sheltered



**20,876,792**

Pounds of Waste Diverted  
from the Landfill



**274**

Veterans  
Served

**121**

Veterans  
Housed



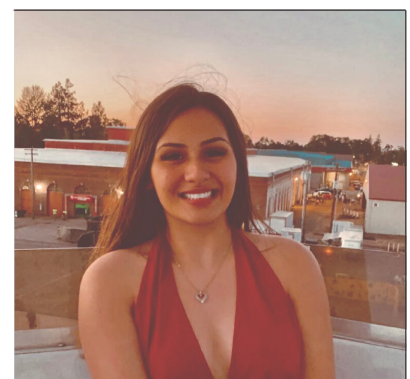
**718**

Families Served at  
First Place Family Center



**332,014**

Mattresses  
Recycled



**10**

Youth Exited to Housing  
from the Youth House



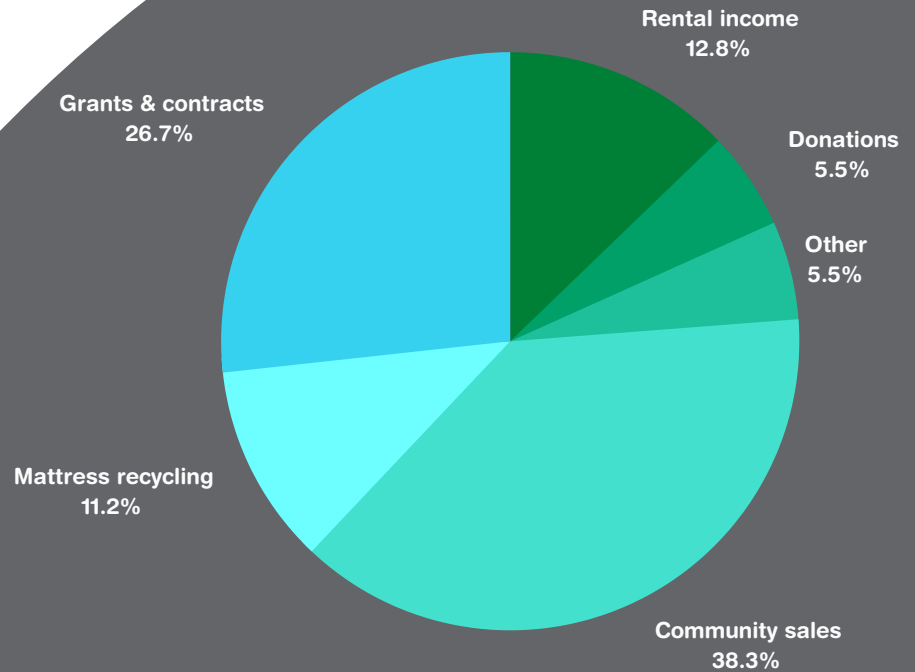


# FINANCIALS

## COMMUNITY & GRANT PROVIDED FUNDS TO SVDP

**TOTAL: \$54,249,130**

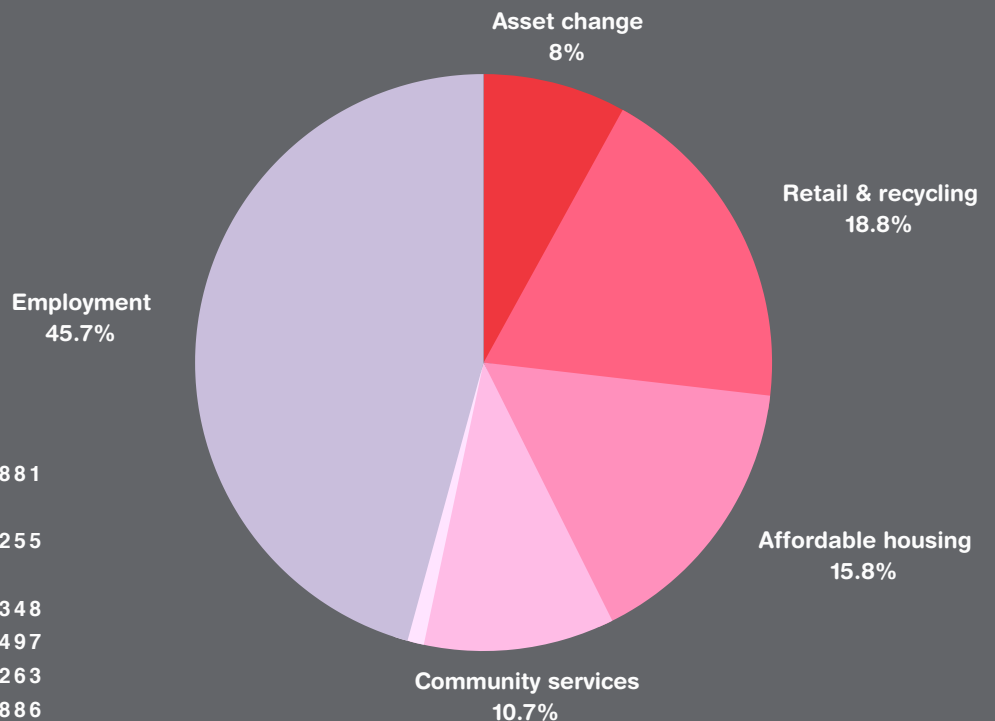
1) Community sales	\$20,758,983
2) Mattress recycling	\$6,086,012
3) Grants & contract services	\$14,501,637
4) Rental income from affordable housing	\$6,940,433
5) Donations and in-kind contributions	\$2,974,236
6) Other income	\$2,987,829



## SVDP'S CONTRIBUTIONS TO THE COMMUNITY

**TOTAL: \$54,249,130**

1) Job creation and continued employment, wages, payroll taxes, and benefits	\$24,818,881
2) Recycling, manufacturing, retail, warehouses, and general	\$10,211,255
3) Affordable housing	\$8,573,348
4) Services and community provided training	\$5,798,497
5) Change in net assets*	\$4,345,263
6) Support services - Development and management, and general	\$501,886



\*The change in net assets (revenue exceeding expenses) was mainly used toward the payment of debt service and for purchases of land, buildings, equipment and construction.

# OUR ORGANIZATION

## Leadership

Board of Directors

### **Executive Director**

Terry McDonald

### **Deputy Director**

Bethany Cartledge

## Housing Development

Have developed 1,700 units

## Housing Programs

Resident Services

Regional Housing Rehabilitation Program (RHRP)

## Property Management

Waitlists open quarterly

Manage 1,500 units

## Retail Stores & Sales

12 retail thrift store locations

eBay & Amazon online stores

Used car lot

## Recycling & Manufacturing

DR3 (mattressrecycling.us)

Appliance recycling

Styrofoam recycling

Electronics recycling

CFC gas recycling



Retail, Recycling, Manufacturing

Affordable Housing



Emergency and Supportive Services

## Emergency Services

Eugene Service Station

Atkinson Food Room

Egan Warming Center

The Hub

Lindholm Social Services Office

## Shelter Assistance for Individuals

Dawn to Dawn

Safe Sleep Sites

Safe Parking Program

## Youth & Family Services

First Place Family Center

First Place Kids

The Youth House

Night Shelter Annex



## Veterans' Housing

Supportive Services for Veteran Families (SSVF)

Veterans Housing Project

Vet LIFT

## Supportive Housing

Connections Rapid Rehousing

LIFT Permanent Supported Housing

LIFT Plus

SPRF

## Self-Sufficiency Services

2nd Chance Renter's Education

Supported Work Experience (SWEX)

Valley Individual Development

Accounts (VIDA)





# THANK YOU!

## Board of Directors

Charlie Burnham, Chair  
Louise "Molly" Westling, Vice Chair  
Ben Mondragon, Secretary  
Ruben Garcia, Vice-Secretary  
J Edwin "Eddie" Roberts, Treasurer

Paul Atkinson  
Trudie Atkinson  
Laurence Hamblen  
Marianne Nicols  
Jennene Norblad  
Marjory Ramey  
Justin Schmick  
Myron Williamson

## McDonald Community Vision (MCV) Committee

Shelly Galvin  
Karen Lacey  
Marianne Nicols  
Richard Sniezco  
Louise "Molly" Westling

## District Council

These volunteer-led groups make home visits, provide food, and raise money for clothing and housewares available through SVdP and St. Vinnie's.

Trudie Atkinson, President  
Dawn McGee, St. Alice  
Kay Beach, St. Catherine  
Kay Goracke, St. Helen  
Julie Morin, St. Henry  
Vickie McGillivray, St. Jude  
Susannah Lustica-Hall, Justice and Peace-Voice of the Poor  
Ray Evans and Tom Shea, St. Mark, Eugene  
John Harshberger, St. Mary, Albany  
Britt Dwyer, Our Lady of the Dunes  
Betty Modin, St. Michael  
Joe Podhasky, St. Paul  
Sandy Murray, St. Peter  
Trudie Atkinson, St. Thomas  
More-Newman Center  
Andrea Choate, Our Lady of Perpetual Help

## Housing Advisory Committee

Mitch Allen, Chair  
Pat Costello  
Trudie Atkinson  
Hoover Chambliss  
John Webster  
Dave Hubin  
Myron Williamson

## Finance Committee

J Edwin "Eddie" Roberts, Chair  
Marianne Nicols  
Holly Cabell  
Pat Costello  
Cheryl Crow  
Jennene Norblad

## FRIENDS OF VINNIE'S



The company to grow with





St. Vincent de Paul  
Society of Lane County, Inc.

P.O. Box 24608  
Eugene, Oregon 97402

Nonprofit Org.  
U.S. Postage  
PAID  
Eugene, OR  
Permit No. 487

# IMPACT REPORT 2020 - 2021



[www.svdp.us](http://www.svdp.us)



@SVdPLaneCounty | @ShopStVinnies